



Challenges and opportunities for non-antibody scaffold drugs

Rodrigo Vazquez-Lombardi^{1,2}, Tri Giang Phan^{1,2}, Carsten Zimmermann³, David Lowe⁴, Lutz Jermutus^{4,5} and Daniel Christ^{1,2}



¹ Garvan Institute of Medical Research, 384 Victoria Street, Darlinghurst, Sydney, NSW 2010, Australia

² The University of New South Wales, Faculty of Medicine, St Vincent's Clinical School, Darlinghurst, Sydney, NSW 2010, Australia

³ University of San Diego, School of Business Administration, 5998 Alcalá Park, San Diego, CA 92110, USA

⁴ MedImmune Ltd., Granta Park, Cambridge CB21 6GH, UK

⁵ Trinity Hall, University of Cambridge, Trinity Lane CB2 1TJ, UK

The first candidates from the promising class of small non-antibody protein scaffolds are now moving into clinical development and practice. Challenges remain, and scaffolds will need to be further tailored toward applications where they provide real advantages over established therapeutics to succeed in a rapidly evolving drug development landscape.

Introduction

Monoclonal antibodies represent a well-validated and rapidly growing class of human therapeutics, characterized by a fully human nature, long serum half-life, bivalency and immune effector functions [1,2]. Despite their successes, monoclonal antibodies nevertheless face a range of restrictions that limit their applicability. Many of these restrictions relate to the size of the antibody molecule, which, in the case of the commonly used IgG isotype, is in the range of 150 kDa. Moreover, antibodies are complex multi-domain proteins, consisting of two different chains (heavy and light) and a total of six different domains (designated V_H, V_L, C_H1, C_H2, C_H3 and C_L). Assembly of the antibody molecule and much of its stability rely on the correct formation of disulfide linkages and on post-translational glycosylation of the constant region [3]. In combination, these requirements complicate the expression of human antibodies in general, and hinder the production in the cytoplasm of bacteria in particular [4,5]. To overcome the size and stability limitations of monoclonal antibodies, a large body of work has focused on the generation of small non-antibody scaffolds for human therapy and imaging applications [6–8]. In this review, we discuss challenges in translating such scaffolds into

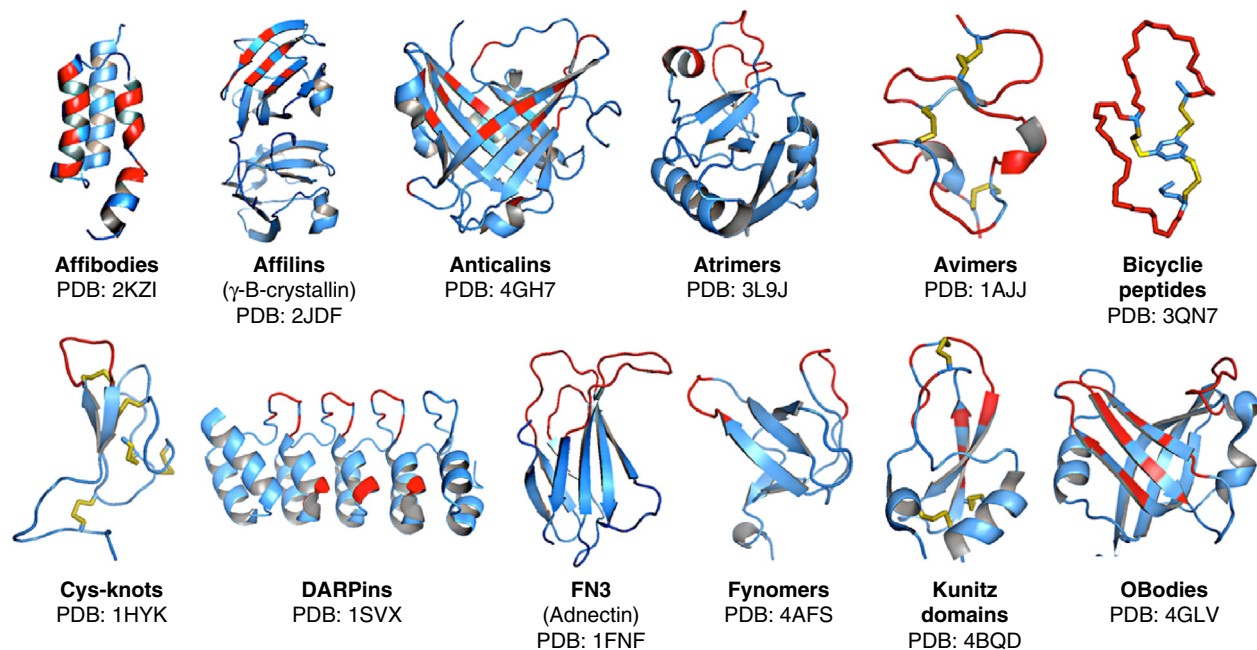
validated drugs, and provide updates on their use in clinical development and practice.

Challenges in the development of non-antibody scaffolds

Non-antibody scaffolds under active development broadly fall into two structural classes, namely domain-sized compounds (at 6–20 kDa molecular weight) and constrained peptides (2–4 kDa) (Fig. 1). Domain-sized scaffolds include Affibodies, Affilins, Anticalins, Atrimers, DARPins, FN3 scaffolds (e.g. Adnectins and Centyrins), Fynomers, Kunitz domains, Pronectins and OBodies, whereas Avimers, bicyclic peptides and Cys-knots are peptide-related. A large number of candidates derived from these scaffolds are currently under academic, preclinical and clinical development (Table 1) and have shown great potential in terms of affinity, target neutralization and stability, see [7] for a comprehensive review.

Despite the considerable promise of non-antibody scaffolds, conversion of the many examples of such modalities into differentiated drugs has been challenging. Although several candidates have progressed into clinical studies, only a single non-antibody scaffold, the Kunitz domain DX-88 (ecallantide; Dyax) has been granted regulatory approval (Box 1), with no further approvals since 2009. Notably, the development of several candidates, including DX-890 and AMG-220, has been halted in recent years

Corresponding authors: Jermutus, L. (jermutusl@medimmune.com), Christ, D. (d.christ@garvan.org.au)



Scaffold	Parental protein	Structure	Randomization	MW (kDa)
<i>Affibodies</i>	Z domain (protein A)	α -helical	Helix randomization	6
<i>Affilins</i>	γ -B-crystallin	β -sheet	Beta-strand randomization	20
	Ubiquitin	$\alpha\beta$	Beta-strand randomization	10
<i>Anticalins</i>	Lipocalin	β -sheet + α -helical terminus	Loop randomization Beta-strand randomization	20
<i>Atrimers</i>	C-type lectin (tetranectin)	$\alpha\beta$	Loop randomization	3 × 20
<i>Avimers</i>	A-domain	Ca ²⁺ binding Disulfide constrained	Loop randomization	4
<i>Bicyclic peptides</i>	Peptide	Chemically constrained	Loop randomization	2
<i>Cys-knots</i>	Peptide	β -sheet Disulfide constrained	Loop randomization	4
<i>DARPin</i>	Ankyrin repeats	α -helical + β -turn	Helix randomization Beta-turn randomization	14-21
<i>FN3 scaffolds</i> (<i>Adnectins</i> , <i>Centyrins</i> , <i>Pronectins</i> , <i>Tn3</i>)	Fibronectin (type III)	β -sheet	Loop randomization Beta-strand randomization	10
<i>Fynomers</i>	SH3 domain (fyn kinase)	β -sheet	Loop randomization	7
<i>Kunitz domains</i>	Serine protease inhibitor	$\alpha\beta$ Disulfide constrained	Loop randomization	7
<i>OBodies</i>	OB-fold	β -sheet	Loop randomization Beta-strand randomization	12

Drug Discovery Today

FIGURE 1

Structural features of non-antibody scaffolds. Non-antibody scaffolds under active development broadly fall into two classes, namely domain-sized compounds (Affibodies, Affilins, Anticalins, Atrimers, DARPins, FN3 scaffolds, Fynomers, Kunitz domains and OBodies) and constrained peptides (Avimers, Bicyclic peptides and Cys-knots). The former class averages around 6–20 kDa, with constrained peptides falling into a lower range of molecular weights at around 2–4 kDa. Illustrations were generated using PyMOL, positions diversified in the scaffolds are highlighted in red, disulfides are highlighted in yellow.

TABLE 1

Protein scaffolds under clinical and preclinical development

Scaffold	Company	Target protein	Drug name	Indications	Status
Adnectins [44,76–79]	Bristol-Myers Squibb	PCSK9 VEGFR2	BMS-962476 Angiocept	Hypercholesterolemia Cancer	Phase I NCT01587365 Phase II NCT00851045 NCT00850577 NCT00562419
		Myostatin EGFR/IGF-1R	BMS-986089 n/a	Cachexia Cancer	Phase I NCT02145234 Preclinical
Affibodies [10,45,50,80–84]	Affibody	HER2	ABY-025	Cancer (PET imaging)	Phase I, II NCT01858116 NCT01216033 NCT02095210
		Complement protein C5 IL-17	SOBI002 ABY-035	Inflammation Autoimmunity	Phase I NCT02083666 Preclinical
		TNF/IL-6 (AffiMab) EGFR, IGF-1R, PDGFR β , HER3, VEGFR2	n/a n/a	Inflammation Cancer	Preclinical Preclinical
Affilins [85,86]	Scil Proteins	Fibronectin EDB splice variant	n/a	Cancer	Preclinical
		CTLA-4 VEGF-A	PRS-010 PRS-050 (Angiocal)	Cancer Cancer	Preclinical Phase I NCT01141257
Anticalins [87–92]	Pieris	Hepcidin	PRS-080	Anaemia	Phase I NCT02340572
		IL-4R α	PRS-060	Asthma	Preclinical
		HGFR	PRS-110	Cancer	Preclinical
		CD137/HER2 IL-23/IL-17	PRS-343 PRS-190	Cancer Autoimmunity	Preclinical Preclinical
Atrimers [93–95]	Anaphore	IL-23 DR4	ATX 3105 n/a	Inflammation Cancer	Preclinical
Avimers [49,96]	Avidia, Amgen	IL-6	AMG220	Crohn's disease	Phase I NCT00353756
Bicyclic peptides [97,98,100,101]	Bicycle Therapeutics	Kallikrein uPA HER2	n/a	Hereditary angioedema Cancer	Preclinical
Centyrins [102]	Janssen	HGFR IL-17 TNF- α	n/a	Cancer Autoimmunity Inflammation	Preclinical
Cys-knots [103]	Medimmune	NaV1.7	n/a	Pain	Preclinical
DARPin s [104–107]	Molecular Partners, Allergan	VEGF-A	MP0112 (Abicipar pegol)	Macular degeneration Macular edema	Phase II, Phase III NCT02462928 NCT02462486 NCT01397409 NCT02186119 NCT02181517
		VEGF-A/PDGF-B VEGF/HGF HER2	MP0260 MP0250 MP0274	Macular degeneration Cancer Cancer	Preclinical Phase I NCT02194426 Preclinical
		TNF/IL-17A (FynomAb) HER2 (FynomAb)	COVA322 COVA208	Plaque psoriasis Cancer	Phase I/II NCT02243787 Preclinical
Kunitz domains [109–112]	Dyax	Kallikrein Neutrophil elastase	DX-88 (Ecallantide) DX-890 (Depelstat)	Hereditary angioedema Acute respiratory distress syndrome	Approved Phase II NCT00455767
		Plasmin	DX-1000	Cancer	Preclinical
		n/a	n/a	n/a	Preclinical
Obodies [113]	Obodies	n/a	n/a	n/a	Preclinical
Pronectins [114]	Protelica	VEGFR2, AXL tyrosine kinase, TNF- α , FZD receptors	n/a	Cancer, Autoimmunity	Preclinical
Tn3 [60,64]	Medimmune	CD40L TRAILR2	n/a	Autoimmunity Cancer	Preclinical

Abbreviations: CD40L, CD40 ligand; CTLA-4, cytotoxic T-lymphocyte antigen 4; DARPin, designed ankyrin repeat proteins; DR4, death receptor 4; ED-B, extra domain-B; EGFR, epidermal growth factor receptor; FZD, frizzled; HER2, human epidermal growth factor receptor type 2; HER3, human epidermal growth factor receptor type 3; HGFR, hepatocyte growth factor receptor; IGF-1R, insulin-like growth factor-1 receptor; IL-17A, interleukin-17A; IL-23, interleukin-23; IL-4R α , interleukin-4 receptor alpha; IL-6, interleukin-6; PCSK9, proprotein convertase subtilisin kexin 9; PDGF-B, platelet-derived growth factor B; PDGFR β , platelet-derived growth factor receptor β ; PET, positron emission tomography; TNF, tumor necrosis factor; TRAILR2, TNF-related apoptosis-inducing ligand receptor 2; uPA, human urokinase-type plasminogen activator; VEGF-A, vascular endothelial growth factor A; VEGFR2, vascular endothelial growth factor receptor 2.

BOX 1

Clinical development of non-antibody scaffolds

Over 50 different protein scaffolds have been reported [6–8]. However, the majority of these scaffolds has exclusively been used in academic settings and only a subset is currently further developed commercially (Table 1). A single non-antibody scaffold has received approval by the FDA, the Kunitz domain Kalbitor[®] (ecallantide; Dyax), a plasma kallikrein inhibitor used for the treatment of hereditary angioedema [144,145]. Ecallantide was selected by phage display [146], inhibits kallikrein activity with picomolar affinity and displays a moderate half-life ($t_{1/2}$ ~2 h) in humans [140,145]. Phase III clinical trials demonstrated significant improvements of acute angioedema symptoms compared with placebo and a favorable safety profile, resulting in the approval of ecallantide in 2009 [147]. Competitors of the drug include the plasma-derived human C1-esterase inhibitors Berinert[®] (CSL-Behring) and Cinryze[®] (ViroPharma/Shire), as well as the bradykinin receptor antagonist Firazyr[®] (Shire). In addition to ecallantide the Kunitz domain DX-890 (depelstat; Dyax), a neutrophil elastase inhibitor, has been assessed in clinical trials of cystic fibrosis [148]. The high stability of this domain enables pulmonary delivery [149], with Phase IIa clinical studies in 2008 resulting in reduced levels of the proinflammatory cytokine interleukin (IL)-8 in patients [111]. No clinical updates of DX-890 development have been reported in recent years.

Affibodies have been developed for imaging applications and allow the visualization of metastases *in vivo* using positron emission tomography (PET) [121,150]. The phage display selected compounds display picomolar affinity against the human epidermal growth factor receptor (HER2)-neu tumor antigen [151]. Owing to their particularly low molecular weight (6 kDa), the compounds are characterized by rapid blood clearance and a favorable biodistribution for imaging applications, as indicated by increased tumor:organ accumulation ratio in comparison with the anti-HER2 IgG monoclonal trastuzumab [19]. A second generation Affibody molecule ABY-025 (Affibody) is currently being evaluated as an imaging agent in Phase I/II clinical trials [80]. More recently, an Affibody compound targeting the complement protein C5 commenced Phase I clinical evaluation for the treatment of inflammatory conditions (Table 1).

Adnectin scaffolds directed against the vascular endothelial growth factor receptor (VEGFR)2 tumor antigen [152] have been reported and are currently under clinical investigation. BMS-844203 (angioccept; Bristol-Myers-Squibb) was selected through mRNA display and binds its target with nanomolar affinity, effectively inhibiting VEGFR2 activation and angiogenesis [153]. CT-322 was formulated as a fusion to polyethyleneglycol (PEG), increasing hydrodynamic radius and half-life (~4 days), while reducing renal clearance [78,154]. Phase I dose escalation studies in humans revealed that the compound was well tolerated, with a maximum dose of 2 mg/kg. Several Phase II studies are currently ongoing, including treatment of recurring glioblastoma [78,155]. Another Adnectin-based compound, BMS-962476, directed against the cholesterol regulator PCSK9, is currently under Phase I investigation for the treatment of hypercholesterolemia [77,156]. Preliminary data from this trial revealed that treatment was well tolerated and displayed high efficacy, with free PCSK9 levels reduced by at least 90% in patients receiving a single 0.3 mg/kg dose [157]. The latest Adnectin to have entered clinical trials is BMS-986089, a myostatin inhibitor for cachexia and muscular dystrophy indications, currently undergoing a Phase I dose-escalation study (Table 1).

AMG220 (C326; Avidia/Amgen) is an Avimer targeting IL-6, a pleiotropic cytokine associated with inflammatory and autoimmune conditions [158]. Selected by phage display, AMG220 displays bi-specificity to its interleukin target, as well as binding to the Fc domain of IgG (resulting in reduced renal clearance and FcRn recycling; Fig. 3). The compound has subpicomolar affinity for IL-6 [49] and displays a moderate serum half-life (~30 h) [96]. Phase I clinical trials of AMG220 in Crohn's disease revealed dose-dependent reduction in serum C-reactive protein, an inflammation biomarker synthesized by hepatocytes in response to IL-6 [96]. Despite its apparent efficacy, Amgen has suspended the clinical development of the compound [114,159,160].

Anticalins are among the more actively developed non-antibody scaffolds, with a high number of lead compounds under preclinical development – directed against CTLA-4 [90], hepcidin [161], hepatocyte growth factor receptor (HGFR; MET) [89], IL-4R α [162] and IL-23/IL-17 [163] (Table 1). PRS-050 (Angiocal[®]; Pieris), is an antiangiogenic Anticalin targeting VEGF-A currently undergoing Phase I clinical investigation. The compound was selected by phage display, and displays picomolar affinity to the VEGF-A molecule, as well as to splice variants [164]. To increase serum half-life (to ~6 days) PRS-050 was coupled to PEG, and evaluated in a dose-escalating Phase I clinical trial in patients with advanced solid tumors [126]. The compound was mostly tolerated up to a dose 10 mg/kg, with no formal maximum dose reached. Rare occurrences of grade 3 and 4 adverse effects were observed in this trial, however most effects were classified as mild-to-moderate. PRS-050 treatment resulted in effective VEGF-A neutralization, as indicated by the absence of free antigen, and the detection of VEGF-A–PRS-050 complexes [88,126].

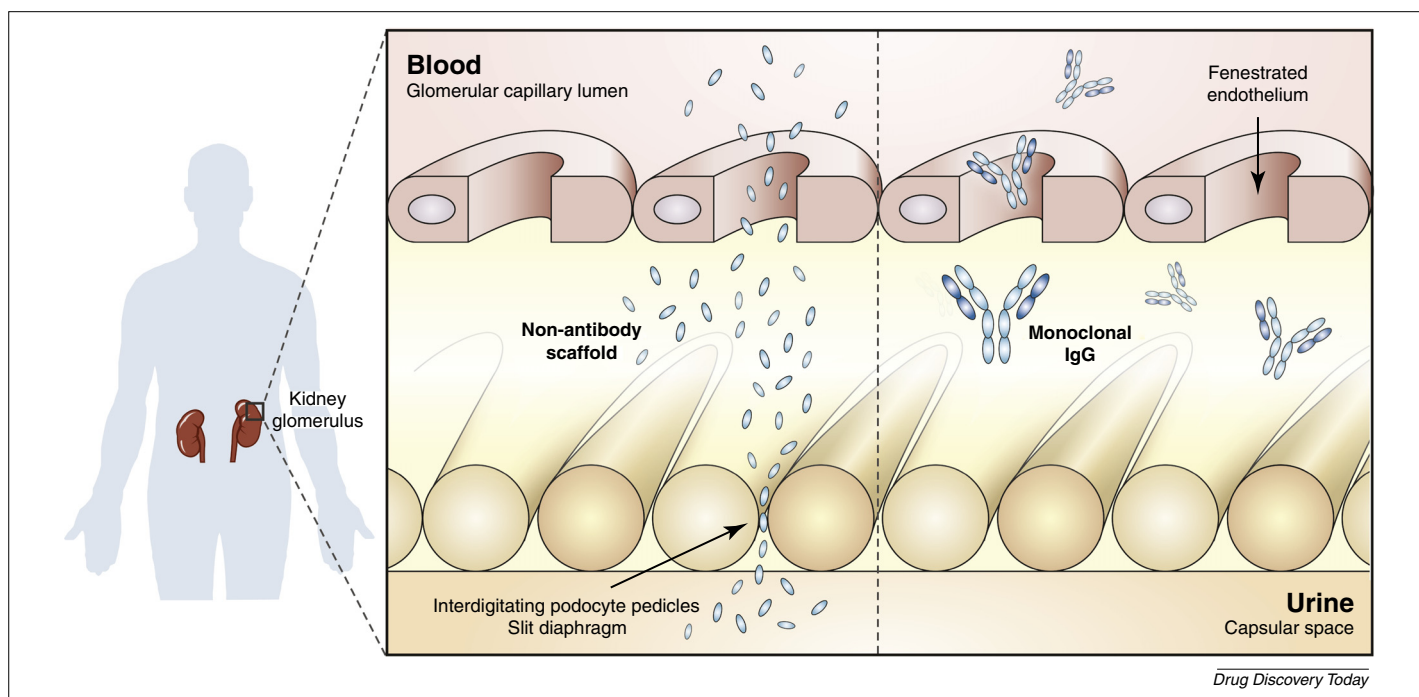
The ankyrin repeat protein (DARPin) MP0112 (Molecular Partners/Allergan) targeting retinal angiogenic disorders driven by VEGF-A is currently being assessed in clinical studies. These disorders include age-related macular degeneration (wet AMD) and diabetic macular edema (Table 1). MP0112 was selected by ribosome display and displays picomolar affinity for its target [137]. Phase I studies of intravitreal injection into the human eye revealed an ocular half-life of ~13 days, with no detectable compound levels in serum. A single treatment dose resulted in undetectable levels of ocular VEGF-A for up to 4 weeks in all patients. Preliminary efficacy data obtained from a limited number of patients indicated reduced edema and improved visual acuity [137]. A subsequent Phase I/II study supported these observations and parallel studies on wet AMD showed favorable outcomes for this indication, including a dose-dependent reduction of vascular leakage [106,165]. MP0112 (abicipar pegol) entered Phase III clinical trials in 2015 (Table 1). In addition to MP0112, the bi-specific DARPin MP0250 targeting VEGF/HGF has recently commenced clinical evaluation for the treatment of solid tumors [166].

(Box 1). Although the reason for discontinuation of each specific candidate varies, it is evident that, as scaffolds have evolved from innovative binding moieties to potential drug candidates, additional requirements have emerged. For example, one such requirement is the ability to match, and preferably exceed, potencies that can be achieved by monoclonal antibodies. The quest for differentiation faces three major challenges, namely serum-half life,

tissue penetration and advances in monoclonal antibody technology.

Serum half-life

Repeated passages in serum significantly increase the uptake of therapeutic proteins into tissue and organs. This is exemplified by human IgG monoclonals, which display long serum half-lives (up

**FIGURE 2**

Serum half-life of scaffolds and monoclonal antibodies. Non-antibody scaffolds are rapidly removed from the bloodstream, through filtration by the slit diaphragm of interdigitating podocyte pedicles. Monoclonal antibodies of the IgG isotype do not underlie renal filtration, as a result of their molecular weight of ~150 kDa, well above the renal filtration barrier (~60 kDa).

to several weeks) [9]. By contrast, unmodified non-antibody scaffolds are largely eliminated through the kidney after a single pass (Fig. 2) [10]. The lack of intrinsic half-life extension immediately puts scaffolds at a disadvantage, by limiting their ability to accumulate at a site of pharmacological action. Consequently, most scaffold-based drug candidates require the use of protein engineering or formulation to ensure continuous exposure after dosing.

Protein engineering can be used in multiple ways to extend the circulating half-life of therapeutic proteins. The first approach is based on increasing size to minimize single-pass kidney filtration. This requires an increase above a critical mass of or above ~60 kDa (renal filtration cut-off) and is generally achieved through genetic fusion with a larger protein or alternatively through conjugation with an organic polymer, such as polyethylene glycol (PEG). The first approach involves genetic fusions with the Fc region of human IgG, or alternatively with serum albumin (both of which interact with FcRn). This strategy is based on exploiting the salvage mechanism mediated by the neonatal Fc receptor (FcRn) expressed on vascular endothelial cells (Fig. 3) [11]. FcRn prevents lysosomal degradation, and recycling can be achieved through direct and indirect strategies [12]. Indirect mechanisms that trigger salvage through FcRn include the engineering of scaffolds to bind IgG or albumin (rather than a direct genetic fusion to these molecules). This approach requires binding to these two serum proteins in ways that do not interfere with their respective FcRn interactions; it could however allow the generation of overall smaller constructs than genetic fusions to antibody Fc regions.

Many examples of scaffold half-life extension have been reported, see [13] for a review. However, it is important to note that the FcRn pathway displays limited efficacy for molecules with

a molecular mass under the renal filtration cut-off, because clearance after a single pass through the kidney tends to be the more dominant mechanism [14]. Therefore, unless advanced formulation or delivery technologies are used, the minimal size for a parenterally administered and infrequently dosed biopharmaceutical drug effectively is ~60 kDa. Unfortunately, the very addition of a 'half-life solution' could thereby limit or even eliminate one of the key advantages of non-antibody scaffolds, namely their relatively small size and low molecular weight (2–20 kDa). An increase in mass could also reduce other advantageous properties of these molecules, such as high soluble expression and stability (Box 2). Scaffold-based molecules with long plasma half-lives thereby risk resembling IgG-like molecules with overall limited differentiation.

Tissue penetration

It is well documented that a low-molecular-weight therapeutic, if of sufficiently high affinity to the target, will distribute more effectively into tissue (Fig. 3), and extensive clinical data, particularly relating to drug penetration into solid tumors, has been reported [15,16]. This is particularly the case for smaller scaffolds in the 2–4 kDa range, which are expected to extravasate and diffuse into tissue effectively [17]. Whereas tissue penetration is a recognized and crucial factor in the design of novel oncology treatments, it is also relevant for other indications, if significant organ diffusion is required following parenteral administration. Examples include targeting less-vascularized tissues and organs, such as intestine, adipose tissue and muscle, as well as renal and lung lumina where, in each case, antibody IgG penetration is limited [18]. Owing to their relatively low molecular weight, unmodified scaffolds (e.g. without half-life extension) display relatively fast tissue penetration in comparison with human IgG

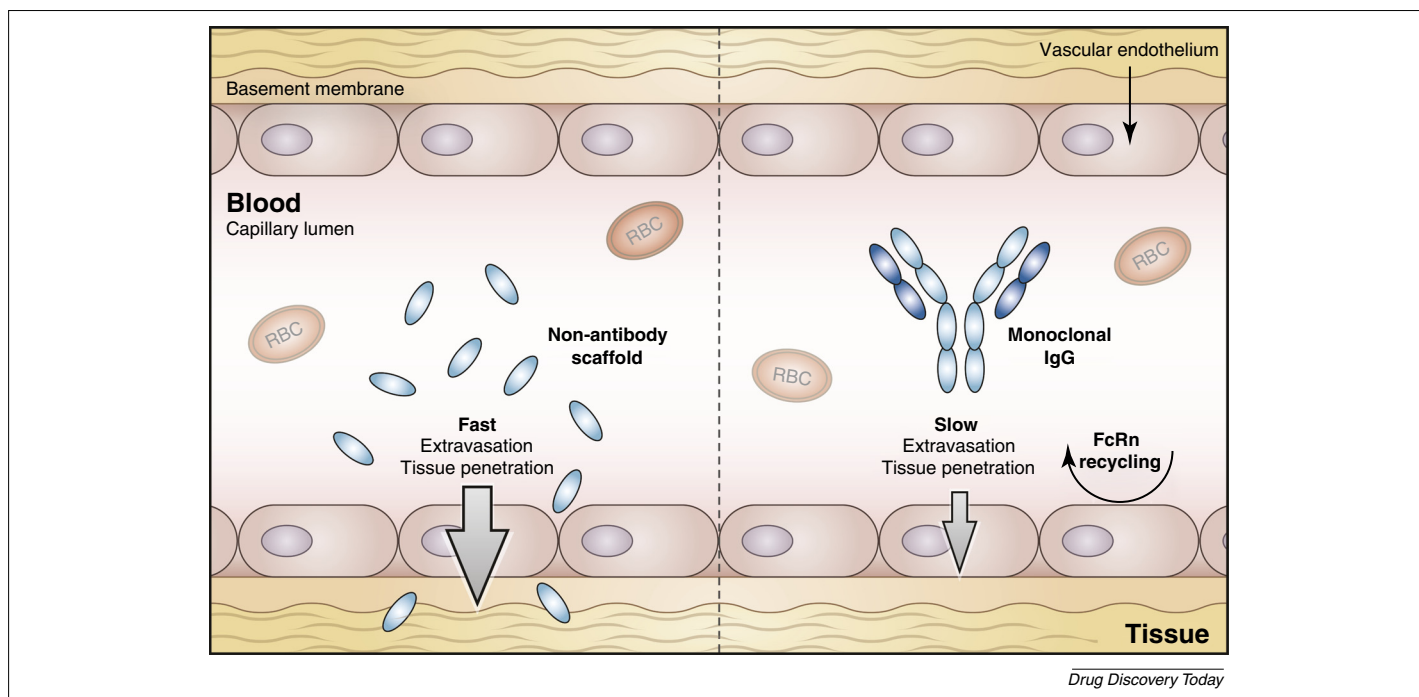


FIGURE 3

Tissue penetration of scaffolds and monoclonal antibodies. Non-antibody scaffolds are capable of high levels of tissue penetration, owing to fast extravasation from the capillary lumen through the vascular endothelium and basement membrane. By contrast, monoclonal antibodies of the IgG isotype are characterized by slow tissue penetration. Unlike unmodified scaffolds, monoclonal antibodies display long serum half-lives, as a result of reduced renal filtration and recycling by FcRn present in the vascular endothelium [11]. *Abbreviations:* RBC, red blood cell; FcRn, neonatal Fc receptor.

monoclonals (Fig. 3) [19–21]. In combination with short serum half-lives, this can be exploited to engineer compounds with excellent signal:noise ratios in imaging applications (Box 3) [22]. A successful example is the development of radiolabeled Affibody molecules for the imaging of human epidermal growth factor (HER2)-positive tumors [19].

However, for therapeutic applications, a general advantage of non-antibody scaffolds is less apparent. Owing to their large molecular weight of ~150 kDa, human IgG antibodies were initially considered to be limited to targets accessible directly from the vasculature [7]. However, more-recent clinical data showed that if dosed highly enough monoclonal antibodies can distribute effectively in less-vascularized tissue [18]. The limiting factor of antibody therapy in respect to tissue penetration therefore does not just relate to the molecular mass of the therapeutic molecule but also to the therapeutic index (i.e. dose at which toxicities will occur) and cost of manufacture (i.e. total dose per patient per year). As long as dose-limiting toxicities occur at doses that are significantly higher than those required for efficient tissue penetration (typically 1–10 mg/kg for IgG), antibody therapeutics can effectively access most tissues in the body. Indeed, owing to their intrinsically high potency, selectivity and specificity, therapeutic indexes of antibodies are often large, enabling high doses to be used clinically that are safe and well tolerated. Notable exceptions relate to the brain and central nervous system [23,24]. In these areas, although high doses will still lead to relatively higher uptake, total drug levels are likely to be too low for significant pharmacological action [25].

In summary, the need for alternative, highly tissue penetrating scaffolds only arises if toxicities occur at doses insufficient for

effective IgG tissue penetration (as can be observed after conjugation with cytotoxic agents, see section below) or if the antibody dose required increases costs of goods to a commercially unviable level. It should also be noted that the total dose is influenced by the amount of drug required for the desired pharmacology and the frequency of administration. For instance, an unmodified scaffold antagonist might be administered at one-tenth of the dose of an equivalent IgG therapeutic, but will require daily instead of bi-weekly or monthly dosing. Scaffolds, however, could offer advantages for locally administered therapeutics (such as for intravitreal injection for ocular diseases), owing to their lower molecular weight and higher solubility, and for applications in which Fc-mediated immune effector functions are unnecessary or undesirable (for instance the neutralization of soluble signaling factors).

Advances in monoclonal antibody technology

Human antibodies of the IgG isotype are characterized by long serum half-lives in the range of days to weeks [9]. Antibody half-life can be further increased to timescales of several months, provided that there is low target-mediated clearance, by engineering the interaction of the antibody Fc region with the FcRn receptor, resulting in increased uptake and favorable dosing regimens [26]. Protein engineering approaches have also allowed the generation of smaller human antibody reagents, thereby reducing the size-advantage of non-antibody scaffolds. For instance, Fcabs (F-star) eliminate the requirement for antibody variable domains, and instead rely exclusively on the antibody Fc region, by engineering novel antigen-binding sites into constant regions [27]. These antibody variants combine the size advantage of a scaffold with the intrinsic antibody half-life extension mechanism

BOX 2

Differentiation among non-antibody scaffolds

The large number of non-antibody scaffolds under development, encompassing a wide range of protein architectures, raises the question of differentiation, and whether certain scaffold types might be particularly suited to specific applications. In terms of architecture and molecular weight, scaffolds fall into two classes (domain-sized and peptide-derived; at 6–20 kDa and 2–4 kDa, respectively). This difference in molecular weight directly relates to differences in production, with peptide-related compounds having the additional advantage of being amenable to manufacture by chemical synthesis [167,100]. By contrast, domain-sized scaffolds generally need to be expressed in bacteria, or alternatively in CHO-, *Pichia-pastoris*- or HEK-293-based eukaryotic systems (Table I). Overall lower molecular weight compared with IgG therapeutics is also considered to be of particular importance for imaging applications (Box 3) and could allow the targeting of otherwise cryptic epitopes within protein clefts and other poorly accessible structural features [100,168,169].

When conducting comparative analyses it should be noted that many scaffolds are proprietary to biopharmaceutical companies and that data access might be restricted. Moreover, published studies could well have been conducted using varying conditions and methodologies, further complicating analyses. Nevertheless, it is evident that there appear to be more similarities than differences between the properties of different scaffold types. This is perhaps not surprising considering similar driving forces faced by companies developing non-antibody scaffolds as human therapeutics. For example, most of the parental scaffold proteins have relatively high melting transitions, such as a T_m of >80 °C for Adnectins [170], 79 °C for Anticalins [171] and ~70 °C for Fynomers [108] – up to ~120 °C for the recently developed Alphabodies [172] – and most are reported to be well expressed in bacteria. By contrast, relatively large variation of properties can be observed among binders of a single scaffold type (Table I). For instance, large differences in melting temperatures have been reported, depending on the actual sequence and antigen specificity of each selected binder. This behavior is probably caused by the small size of the scaffolds, resulting in the effect that relatively minor sequence changes can induce profound changes of overall biophysical or pharmacokinetic properties [173]. Owing to their smaller size (2–20 kDa), residues in non-antibody scaffolds could be involved in high affinity binding, as well as important biophysical properties, such as thermodynamic or colloidal stability [174]. Recognition of different molecular targets could therefore have direct impact on a wide range of scaffold characteristics, which is in marked contrast to human antibody therapeutics of the IgG isotype (150 kDa). Although the effect of sequence variation could in principle be analyzed by computational or high-throughput methods, further releases of preclinical and clinical data will ultimately be necessary to evaluate robustness and applicability of different scaffold types.

TABLE I

Biophysical and pharmacokinetic properties of non-antibody scaffolds.

Scaffold	Expression	Stability	Half-life (<i>in vivo</i>)
Adnectins	<i>Escherichia coli</i> 20–40 mg/l [115]	T_m parent = 84 °C [116] T_m selected = 37–73 °C [115,117]	>53 h (PEG) [78]
Affibodies	Peptide synthesis [118] <i>E. coli</i> [119]	T_m parent = ~75 °C [120] T_m = 42–71 °C [118]	4–14 min [121]
Afflins	<i>E. coli</i> 100 mg/l [85]	γ -B-crystallin-based T_m parent = 80 °C T_m selected = 56–72 °C [85] Ubiquitin-based T_m parent = 82 °C T_m selected = 54–66 °C [122]	n/a 20–56 h in mice (PEGylated, Fc- or MSA-fused) [122]
Anticalins	<i>E. coli</i> 2–20 mg/l [123]	T_m parent = 79 °C T_m selected = 53–73 °C [123–125]	~6 d (PEG) [126]
Atrimers	<i>E. coli</i> [127]	Stable at 70–80 °C [95]	~24 h (parental tetranectin)[95]
Avimers	<i>E. coli</i> \geq 1.4 g/l [49]	No aggregation after 2 weeks at 50 °C [49]	30 h (Fc binding domain)[96]
Bicyclic peptides	Peptide synthesis [100] HEK-293 \geq 80 mg/l [128]	n/a	30 min in mice [129] >24 h in mice (ABP- or Fc-fused) [128,129]
Centyrins	<i>E. coli</i>	T_m parent = 93 °C T_m selected = 46–87 °C [102]	n/a
Cys-knots	<i>E. coli</i> 5–20 mg/l [130,131] Peptide synthesis [132]	T_m > 100 °C [133,134]	<35 min in mice [135]
DARPinS	<i>E. coli</i> Up to 200 mg/l [136]	T_m > 66–89 °C [35,136]	\geq 13 d (PEG, ocular half-life) [137] 3 min in mice [20]
Fynomers	<i>E. coli</i> 24–78 mg/l [138] CHO 3.5–20.7 mg/l [46,139]	T_m parent = ~70 °C [139]	68 h in mice (Fc-fused) [139]
Kunitz domains	<i>Pichia pastoris</i> [140]	\geq 75% active after heating to 95 °C [140,141]	2 h [142]
OBodies	<i>E. coli</i> 100–200 mg/l [113]	T_m = 66–81 °C [113]	n/a
Tn3	<i>E. coli</i> 40–400 mg/l [60]	T_m = ~83 °C [143]	36 min in mice [60]

Abbreviations: ABP, albumin-binding peptide; CHO, Chinese hamster ovary cells; Fc, fragment crystallizable; HEK, human embryonic kidney cells; MSA, mouse serum albumin; PEG, polyethylene glycol; T_m : melting temperature.

BOX 3

Imaging applications of non-antibody scaffolds

Non-antibody protein scaffolds (including Affibodies, Bicyclic peptides, Cys-knots, DARPins, Anticalins and Adnectins) have been successfully conjugated to radionuclides and near-infrared (NIR) fluorescent dyes for *in vivo* imaging of solid tumors, reviewed in [175]. These reagents with affinities down to the nanomolar to picomolar range have several biophysical properties that make them ideal candidates for molecular imaging in preclinical and clinical studies. Important properties that distinguish them from antibody-based reagents are the absence of the immunoglobulin Fc region and an overall small size (2–20 kDa), enabling efficient capillary extravasation and tissue diffusion (Fig. 3). This behavior is particularly relevant to diagnostic applications in oncology [176,177]. In addition, unmodified scaffolds that do not include antibody Fc regions or bind to IgG or albumin, display short serum half-life and are rapidly cleared from the body (Fig. 2). Such protein scaffolds offer the potential of increased signal:noise ratios in comparison to antibody-based imaging reagents. This is exemplified by the iodinated ABY-002 Affibody molecule, which displays excellent bioavailability and image contrast when benchmarked against the anti-HER2 monoclonal antibody trastuzumab (Herceptin[®]; Genentech) [19].

More recently, multiple studies have provided insights into the biophysical characteristics that maximize tumor uptake and minimize off-target effects. In addition to low molecular weight as a key determinant of vascular permeability and tissue accessibility [177,178], these studies have also revealed other effects that influence the retention of the label in the tumor. These include affinity and avidity of the scaffold, as demonstrated for DARPins [20] and Affibodies [151], and whether it is internalized and degraded [179]. In addition, overall hydrophilicity has been shown to determine whether the scaffold is retained in off-target sites such as the liver or the kidneys. This has been demonstrated for Adnectins, which are relatively hydrophilic and have been shown to have longer renal than hepatic retention [180]. Similarly, removal of electric charges from Cys-knots [181] and Adnectins [180] has been shown to reduce renal retention. Importantly, chelators used to conjugate protein scaffolds to radionuclides for positron emission tomography (PET), single-photon emission computed tomography (SPECT) and scintigraphic imaging, and NIR dyes for optical imaging have the potential to alter size, affinity and charge. For example, the substitution of a positively charged lysine residue with the neutral serine has been shown to decrease renal retention of an Affibody molecule [182].

An innovative concept, originally developed to improve the delivery of therapeutic payloads and imaging reagents by monoclonal antibodies, is the use of pre-targeting with a bi-specific molecule [183]. The approach involves the use of bi-specifics recognizing tumor antigen and a small ligand, which can be administered at a later stage after the antibody has been cleared from the circulation and from off-target sites. This ligand can serve as a vehicle for payload delivery for therapeutic or imaging applications. Examples include an Anticalin domain specific for fluorescein fused to an antibody specific for a tumor antigen. This pre-targeting strategy has enabled sensitive *in vivo* imaging of tumors using a fluorescein–NIR-dye conjugate [184].

through FcRn binding and could potentially offer significant tumor uptake per injected dose by combining the advantages of small size and long circulating half-life [27,28]. The clinical evaluation of an anti-HER2 FcabTM (NCT02286219) will determine whether these favorable pharmacokinetic properties are translatable into humans.

Although non-antibody scaffolds often display high thermodynamic stabilities, it is evident that the stability of human antibody reagents can be increased through well-established protein engineering approaches [3]. A generally low propensity to aggregate is another desirable property of non-antibody scaffolds; however, methods for increasing the aggregation resistance of human antibody reagents are increasingly becoming available [3,29–31]. Finally, the cost of production of non-antibody scaffolds is potentially lower, because of the possibility of using bacterial rather than mammalian expression systems [32,33]. However, with a large number of antibody therapeutics transitioned into commercial production and increased economies of scale, the cost of goods for CHO-cell-expressed antibody IgG therapeutics is decreasing, and can often be adequately controlled through efficient chemistry, manufacturing and control (CMC) processes [32].

Strategies for the generation of differentiated non-antibody scaffold drugs

To overcome challenges associated with serum half-life, tissue penetration and advances in monoclonal antibody technology, a wide range of protein engineering and drug delivery approaches have been applied to non-antibody scaffolds. Here, we discuss current advances and propose further areas of innovation.

Formulation and novel delivery devices

Owing to the problems associated with half-life extension the use of slow-release formulations and innovative drug delivery devices could become an attractive strategy for non-antibody scaffolds. Provided the required efficacious total dose is sufficiently low (in terms of mg), both approaches can enable high serum concentration, despite the use of drug candidates with intrinsically short serum half-life. Slow release formulation has a long track record in the administration of agonistic peptides (including Zoladex[®] and Bydureon[®]), but has not been extensively applied to non-antibody scaffolds [34]. This is because of the antagonistic pharmacology of most scaffold-based drug candidates, which generally require relatively high doses to neutralize a significant proportion of the target molecule stoichiometrically. Such doses had been considered too high to be formulated successfully through a slow-release approach. However, with recent reports of scaffolds engineered to reach antibody-like affinities in the picomolar [35] to femtomolar [36] range, such limitations might no longer apply for next-generation candidates. With the typical molecular weight of a non-antibody scaffold at one-tenth of an IgG monoclonal (assuming unmodified scaffolds), doses of up to 10 mg per administration could thereby become feasible, which are accessible through slow-release formulation. Alternatively, innovative drug delivery devices, such as mini-pumps, are increasingly becoming available. Such devices were pioneered in the treatment of diabetes patients, and are currently in late-stage clinical testing [37]. Examples include exenatide, a short-half-life glucagon-like peptide (GLP-1) receptor agonist, administered through up to yearly dosing. Significant opportunities exist through the use of such devices

to turn potent but short half-life scaffolds into differentiated drug candidates. This area has remained largely unexplored, however it might well see increasing interest as companies try to find new ways to generate candidates out of their often significant investment in scaffold technologies [38,39].

Multi-specificity

The concept of dual (or multiple) specificity has attracted considerable attention in recent years [40–42]. Many approaches focus on the concept of taking two or more validated biologics and combining them in one construct. Such constructs have the ability to target either multiple proteins or multiple epitopes on the same molecule simultaneously [43] and several examples of scaffold-based constructs have been reported (including DARPins, Anticalins, Affibodies, Adnectins and Fynomers) [44–50]. The latter strategy can potentially lead to enhanced neutralization efficacy [51] or to increased clearance through the induction of large immune complexes [52]. Although considerable advances have been made in the design and manufacture of antibody-based bi- or multi-specifics, challenges remain. In particular, accurate prediction of the resulting combined pharmacology and the accurate adaptation of each pharmacological activity to result in a potent but nontoxic molecule at, effectively, a fixed dose have turned out to be more complex than first anticipated. Furthermore, a multi-selective biologic might require multiple biomarkers to assess the therapeutic window accurately for each pharmacological moiety, resulting in a significant increase in development costs – discussed in further detail, in particular in comparison to polyclonal antibody approaches, in a recent review on bi-specifics [53]. Consequently, a majority of the limited number of non-cell-crosslinking, bi-specific antibodies progressing to pivotal Phase IIb studies target highly related biological pathways, thereby simplifying the translational medicine and safety strategy. Examples include antibodies against IL-4/IL-13 (Sanofi) [54], Her1/Her3 (Genentech/Roche) [55] or Her2/Her3 (Merrimack Pharmaceuticals) [56]. However, the targeting of related pathways could also ultimately limit the differentiation of the resulting bi-specific versus the mono-specific parental antibodies or, indeed, combinations of the parental antibodies.

The remaining technical complexities of generating multi-specific antibody therapeutics open up possibilities for the development of non-antibody scaffolds, either on their own or as an ‘add-on’ to antibody therapeutics [51,50]. Indeed, multimerization plays to the advantage of scaffold platforms, which provide highly soluble, stable and well-expressing monomer building blocks for such strategies. Moreover, a potentially unique feature of scaffold multimerization is the ability to generate potent agonists, which can be readily achieved for targets that can be activated through simple di- or tri-merisation. Examples for this behavior include the tumor necrosis factor (TNF) family of receptors [57] and many G-protein-coupled receptors (GPCRs) [58]. The approach is exemplified by the targeting of TRAIL-R2 (also known as death receptor 5, DR5) with several candidates under preclinical [59,60] and clinical [61] development. Multimerization has also been described as a pragmatic way to boost the potency of the often more weakly binding monomer [62,63]. Scaffold multimerization is not without challenges, for instance repeating identical epitopes within a molecule can trigger innate immunity [64]. Protein multimeriza-

BOX 4

Immunogenicity of non-antibody scaffolds

Immune responses to administered protein therapeutics remain a significant challenge for clinical success. For non-antibody scaffolds immunogenicity can represent a greater challenge than for antibodies, particularly for those derived from non-human or synthetic proteins. An innovative approach relates to the recent development of scaffolds chemically synthesized with D-amino acids (Reflexion Pharmaceuticals) [185]. These compounds are mirror images of their parental protein G B1-domains and are expected to be structurally nonimmunogenic [186].

To date, there have been few reported clinical trials of non-antibody scaffolds. Kalbitor® (ecallantide; Dyax), currently the only non-antibody scaffold protein therapeutic approved by the FDA, has undergone extensive clinical trials for the treatment of hereditary angioedema [187,188]. In 216 patients treated with ecallantide, 36 (17%) developed anti-drug antibodies, along with several reported cases of patients developing antibodies to *Pichia pastoris*, the organism used to manufacture the drug. BMS-844203 (angiocept; Bristol-Myers-Squibb), an Adnectin targeting vascular endothelial growth factor receptor (VEGFR)2 has been assessed at escalating intravenous doses in patients with advanced solid tumors [78]. This study reported anti-drug antibodies in 31 of 38 (82%) patients. Subsequent epitopic analysis revealed that the anti-drug antibodies bound to the engineered binding loops of the Adnectin. A Phase I study of PRS-050 (Angiocal®; Pieris), an Anticalin targeting VEGF-A, in 25 patients with advanced solid tumors also reported no anti-drug antibody responses in any of the patients [126].

It remains difficult to draw general conclusions from what is so far a small number of clinical studies, in terms of predicting immunogenicity and the effects on safety and efficacy. Moreover, immunogenicity is a complex phenomenon that is known to be influenced by factors outside of the molecular structure of the therapeutic (including dosing, formulation, excipients, the presence of contaminants such as host cell proteins or degradation products, the route of administration, and the immune and genetic status of the patient) [189]. Although preclinical assessment of immunogenicity risk can be conducted using *in silico* or *in vitro* prediction methods or by *in vivo* assessment of anti-drug responses in rodents or non-human primates [190], clinical data required to determine relative utility in predicting anti-drug responses in patients is not yet publically available. Further clinical studies of non-antibody scaffold therapeutics will ultimately be required to address the relative immunogenicity of different scaffold classes.

tion can also initiate aggregation processes, which increase the immunogenic potential (Box 4) [64,65]. However, the high intrinsic stability of non-antibody scaffolds is likely to limit such processes [7].

Drug conjugates

Although nonmodified IgG antibodies typically show toxicities only at super-pharmacological doses, they are more common for antibody–drug conjugates (ADCs) at even moderate dose levels [66]. These toxicities can be dose-limiting in the clinic, and in turn limit the penetration of the ADC into solid tumors (this is in contrast to liquid tumors where malignant cells are mostly accessible in serum and generally less affected by dose restrictions) [59]. Scaffolds have the potential to offer significant advantages in such a scenario, by delivering a toxic moiety deep into a solid tumor mass while being rapidly cleared from systemic circulation. Early

ADC designs were based on human antibody fragments. Examples include moxetumomab pasudotox (Medimmune/AstraZeneca), a CD22-targeting antibody fragment fused to a shortened *Pseudomonas* exotoxin, which has now reached Phase III trials [67]. Furthermore, antibody-based ADCs can suffer from aggregation owing to the hydrophobicity of the attached chemical payload [68,69]. Stable and nonaggregating scaffolds can therefore provide an attractive alternative in such situations, in particular if an overall small molecular weight compatible with high tumor uptake can be maintained [17,70] and a wider range of conjugation chemistries can be explored compared to working with IgG antibodies [71]. A number of reports demonstrate that scaffolds, in particular constrained peptides, unmodified and as conjugates to radionuclides, are highly metabolically stable [72,73] and were shown to be secreted intact in the urine [74]. This high metabolic stability is achieved by working with fully synthetic molecules where a stable and highly inert linkage between the scaffold peptide and the conjugate can be easily selected.

Concluding remarks

Over the past decade, a large number of pharmaceutical companies have invested significantly in either acquiring or building in-house

scaffold technologies. The first generation of such non-antibody drug candidates is now progressing into clinical trials. However, challenges remain, and the wider translation of scaffold drugs into clinical practice will require additional innovation. Although a handful of promising and differentiated scaffold drug candidates continue to advance clinically, it could be their use as drug conjugates, or the combination with advanced formulation and delivery technology, that will ultimately drive value creation. Considering that the expenditure of developing over 50 scaffold technologies will have to be recovered, this will require considerable time and the development of new and differentiated therapeutic leads. Scaffold-based platforms could also allow the development of fast and efficient diagnostics, resulting in a reduced cost of clinical imaging, an application with significant promise. Disruptive innovation could also result from further reducing the molecular size of the scaffolds down to the proportions of macrocycle drugs [75]. This could open up new and exciting opportunities, including the targeting of intracellular interactions and oral administration. In summary, further creativity will be required to transform this promising class of binding molecules into validated therapeutic and diagnostic modalities.

References

- Nelson, A.L. *et al.* (2010) Development trends for human monoclonal antibody therapeutics. *Nat. Rev. Drug Discov.* 9, 767–774
- Presta, L.G. (2008) Molecular engineering and design of therapeutic antibodies. *Curr. Opin. Immunol.* 20, 460–470
- Rouet, R. *et al.* (2014) Stability engineering of the human antibody repertoire. *FEBS Lett.* 588, 269–277
- Birch, J.R. and Racher, A.J. (2006) Antibody production. *Adv. Drug Deliv. Rev.* 58, 671–685
- Rouet, R. *et al.* (2012) Expression of high-affinity human antibody fragments in bacteria. *Nat. Protoc.* 7, 364–373
- Skerra, A. (2007) Alternative non-antibody scaffolds for molecular recognition. *Curr. Opin. Biotechnol.* 18, 295–304
- Binz, H.K. *et al.* (2005) Engineering novel binding proteins from nonimmunoglobulin domains. *Nat. Biotechnol.* 23, 1257–1268
- Löfblom, J. *et al.* (2011) Non-immunoglobulin based protein scaffolds. *Curr. Opin. Biotechnol.* 22, 843–848
- Kontermann, R.E. (2011) Strategies for extended serum half-life of protein therapeutics. *Curr. Opin. Biotechnol.* 22, 868–876
- Löfblom, J. *et al.* (2010) Affibody molecules: engineered proteins for therapeutic, diagnostic and biotechnological applications. *FEBS Lett.* 584, 2670–2680
- Roopenian, D.C. and Akilesh, S. (2007) FcRn: the neonatal Fc receptor comes of age. *Nat. Rev. Immunol.* 7, 715–725
- Sleep, D. *et al.* (2013) Albumin as a versatile platform for drug half-life extension. *Biochim. Biophys. Acta* 1830, 5526–5534
- Carter, P.J. (2011) Introduction to current and future protein therapeutics: a protein engineering perspective. *Exp. Cell Res.* 317, 1261–1269
- Wilkinson, I.C. *et al.* (2013) Monovalent IgG4 molecules: immunoglobulin Fc mutations that result in a monomeric structure. *MAbs* 5, 406–417
- Chauhan, V.P. *et al.* (2011) Delivery of molecular and nanoscale medicine to tumors: transport barriers and strategies. *Annu. Rev. Chem. Biomol. Eng.* 2, 281–298
- Lammers, T. *et al.* (2012) Drug targeting to tumors: principles, pitfalls and (pre-) clinical progress. *J. Control. Release* 161, 175–187
- Wittrup, K.D. *et al.* (2012) Practical theoretic guidance for the design of tumor-targeting agents. *Methods Enzymol.* 503, 255–268
- Shah, D.K. and Betts, A.M. (2013) Antibody biodistribution coefficients: inferring tissue concentrations of monoclonal antibodies based on the plasma concentrations in several preclinical species and human. *MAbs* 5, 297–305
- Orlova, A. *et al.* (2009) On the selection of a tracer for PET imaging of HER2-expressing tumors: direct comparison of a 124I-labeled affibody molecule and trastuzumab in a murine xenograft model. *J. Nucl. Med.* 50, 417–425
- Zahnd, C. *et al.* (2010) Efficient tumor targeting with high-affinity designed ankyrin repeat proteins: effects of affinity and molecular size. *Cancer Res.* 70, 1595–1605
- Natarajan, A. *et al.* (2013) A novel engineered anti-CD20 tracer enables early time PET imaging in a humanized transgenic mouse model of B-cell non-hodgkins lymphoma. *Clin. Cancer Res.* 19, 6820–6829
- Mendler, C.T. *et al.* (2015) High contrast tumor imaging with radio-labeled antibody Fab fragments tailored for optimized pharmacokinetics via PASylation. *MAbs* 7, 96–109
- Bien-Ly, N. *et al.* (2014) Transferrin receptor (TfR) trafficking determines brain uptake of TfR antibody affinity variants. *J. Exp. Med.* 211, 233–244
- Watts, R.J. and Dennis, M.S. (2013) Bispecific antibodies for delivery into the brain. *Curr. Opin. Chem. Biol.* 17, 393–399
- Henderson, S.J. *et al.* (2014) Sustained peripheral depletion of amyloid-beta with a novel form of neprilysin does not affect central levels of amyloid-beta. *Brain* 137, 553–564
- Vaccaro, C. *et al.* (2005) Engineering the Fc region of immunoglobulin G to modulate *in vivo* antibody levels. *Nat. Biotechnol.* 23, 1283–1288
- Traxlmayr, M.W. *et al.* (2013) Directed evolution of Her2/neu-binding IgG1-Fc for improved stability and resistance to aggregation by using yeast surface display. *Protein Eng. Des. Sel.* 26, 255–265
- Woisetschlager, M. *et al.* (2014) *In vivo* and *in vitro* activity of an immunoglobulin Fc fragment (Fcab) with engineered Her-2/neu binding sites. *Biotechnol. J.* 9, 844–851
- Dudgeon, K. *et al.* (2012) General strategy for the generation of human antibody variable domains with increased aggregation resistance. *Proc. Natl. Acad. Sci. U. S. A.* 109, 10879–10884
- Dudgeon, K. *et al.* (2009) Sequence determinants of protein aggregation in human VH domains. *Protein Eng. Des. Sel.* 22, 217–220
- Christ, D. *et al.* (2007) Repertoires of aggregation-resistant human antibody domains. *Protein Eng. Des. Sel.* 20, 413–416
- Shukla, A.A. and Thommes, J. (2010) Recent advances in large-scale production of monoclonal antibodies and related proteins. *Trends Biotechnol.* 28, 253–261
- Corchero, J.L. *et al.* (2013) Unconventional microbial systems for the cost-efficient production of high-quality protein therapeutics. *Biotechnol. Adv.* 31, 140–153
- Stevenson, C. *et al.* (2012) Delivery of peptides and proteins via long acting injections and implants. In *Long Acting Injections and Implants* (Wright, J.C. and Burgess, D.J., eds), pp. 409–427, Springer
- Zahnd, C. *et al.* (2007) A designed ankyrin repeat protein evolved to picomolar affinity to Her2. *J. Mol. Biol.* 369, 1015–1028

- 36 Jonsson, A. *et al.* (2008) Engineering of a femtomolar affinity binding protein to human serum albumin. *Protein Eng. Des. Sel.* 21, 515–527
- 37 Available at: <http://www.intarcia.com/>.
- 38 Putney, S.D. and Burke, P.A. (1998) Improving protein therapeutics with sustained-release formulations. *Nat. Biotechnol.* 16, 153–157
- 39 Jung, Y.S. *et al.* (2013) Temperature-modulated noncovalent interaction controllable complex for the long-term delivery of etanercept to treat rheumatoid arthritis. *J. Control. Release* 171, 143–151
- 40 Lewis, S.M. *et al.* (2014) Generation of bispecific IgG antibodies by structure-based design of an orthogonal Fab interface. *Nat. Biotechnol.* 32, 191–198
- 41 Rouet, R. and Christ, D. (2014) Bispecific antibodies with native chain structure. *Nat. Biotechnol.* 32, 136–137
- 42 Spiess, C. *et al.* (2013) Bispecific antibodies with natural architecture produced by co-culture of bacteria expressing two distinct half-antibodies. *Nat. Biotechnol.* 31, 753–758
- 43 Byrne, H. *et al.* (2013) A tale of two specificities: bispecific antibodies for therapeutic and diagnostic applications. *Trends Biotechnol.* 31, 621–632
- 44 Emanuel, S.L. *et al.* (2011) A fibronectin scaffold approach to bispecific inhibitors of epidermal growth factor receptor and insulin-like growth factor-I receptor. *MAbs* 3, 38–48
- 45 Fleetwood, F. *et al.* (2014) Simultaneous targeting of two ligand-binding sites on VEGFR2 using biparatopic Affibody molecules results in dramatically improved affinity. *Scientific Rep.* 4, 7518
- 46 Grabulovski, D. *et al.* (2013) COVA322: overcoming limitations of current biologics in rheumatoid arthritis by a novel, bispecific tumor-necrosis-factor- α /interleukin-17A (TNF/IL-17A) inhibitor moving towards the clinic. *Arthritis Rheumat.* 65, S544
- 47 Le Couter, J. and Scheer, J.M. (2014) Bispecific therapeutics for ophthalmic indications: target selection and the optimal molecular format. *Exp. Rev. Ophthalmol.* 9, 217–225
- 48 Schlehuber, S. and Skerra, A. (2001) Duocalins: engineered ligand-binding proteins with dual specificity derived from the lipocalin fold. *Biol. Chem.* 382, 1335–1342
- 49 Silverman, J. *et al.* (2005) Multivalent avimer proteins evolved by exon shuffling of a family of human receptor domains. *Nat. Biotechnol.* 23, 1556–1561
- 50 Yu, F. *et al.* (2014) An affibody-adalimumab hybrid blocks combined IL-6 and TNF-triggered serum amyloid A secretion *in vivo*. *MAbs* 6, 1598–1607
- 51 Spangler, J.B. *et al.* (2012) Triepitopic antibody fusions inhibit cetuximab-resistant BRAF and KRAS mutant tumors via EGFR signal repression. *J. Mol. Biol.* 422, 532–544
- 52 Nowakowski, A. *et al.* (2002) Potent neutralization of botulinum neurotoxin by recombinant oligoclonal antibody. *Proc. Natl. Acad. Sci. U. S. A.* 99, 11346–11350
- 53 Spiess, C. *et al.* (2015) Alternative molecular formats and therapeutic applications for bispecific antibodies. *Mol. Immunol.* 67, 95–106
- 54 Dhimolea, E. and Reichert, J.M. (2012) World bispecific antibody summit, September 27–28, 2011, Boston, MA. *MAbs* 4, 4–13
- 55 Schaefer, G. *et al.* (2011) A two-in-one antibody against HER3 and EGFR has superior inhibitory activity compared with monospecific antibodies. *Cancer Cell* 20, 472–486
- 56 McDonagh, C.F. *et al.* (2012) Antitumor activity of a novel bispecific antibody that targets the ErbB2/ErbB3 oncogenic unit and inhibits heregulin-induced activation of ErbB3. *Mol. Cancer Ther.* 11, 582–593
- 57 Pardee, A.D. *et al.* (2009) Integrating costimulatory agonists to optimize immune-based cancer therapies. *Immunotherapy* 1, 249–264
- 58 Hutchings, C.J. *et al.* (2013) Monoclonal anti- β -adrenergic receptor antibodies activate G protein signaling in the absence of β -arrestin recruitment. *MAbs* 6, 246–261
- 59 Adair, J.R. *et al.* (2012) Antibody–drug conjugates – a perfect synergy. *Exp. Opin. Biol. Ther.* 12, 1191–1206
- 60 Swers, J.S. *et al.* (2013) Multivalent scaffold proteins as superagonists of TRAIL receptor 2-induced apoptosis. *Mol. Cancer Ther.* 12, 1235–1244
- 61 Chen, H. *et al.* (2012) Abstract 239: a novel multimeric protein scaffold stimulates apoptotic signaling through TRAILR2. *Cancer Res.* 7 (Suppl. 8), 239
- 62 Duan, J. *et al.* (2007) Fibronectin type III domain based monobody with high avidity. *Biochemistry* 46, 12656–12664
- 63 Chittasupho, C. (2012) Multivalent ligand: design principle for targeted therapeutic delivery approach. *Ther. Deliv.* 3, 1171–1187
- 64 Oganessian, V. *et al.* (2013) Fibronectin type III domains engineered to bind CD40L: cloning, expression, purification, crystallization and preliminary X-ray diffraction analysis of two complexes. *Acta Crystallogr. F. Struct. Biol. Cryst. Commun.* 69, 1045–1048
- 65 Ratanji, K.D. *et al.* (2013) Immunogenicity of therapeutic proteins: influence of aggregation. *J. Immunotoxicol.* 11, 99–109
- 66 Saber, H. and Leighton, J.K. (2015) An FDA oncology analysis of antibody–drug conjugates. *Reg. Toxicol. Pharmacol.* 71, 444–452
- 67 Kreitman, R.J. and Pastan, I. (2011) Antibody fusion proteins: anti-CD22 recombinant immunotoxin moxetumomab pasudotox. *Clin. Cancer Res.* 17, 6398–6405
- 68 Lyon, R.P. *et al.* (2015) Reducing hydrophobicity of homogeneous antibody–drug conjugates improves pharmacokinetics and therapeutic index. *Nat. Biotechnol.* 33, 733–735
- 69 Adem, Y.T. *et al.* (2014) Auristatin antibody drug conjugate physical instability and the role of drug payload. *Bioconjugate Chem.* 25, 656–664
- 70 Berndorff, D. *et al.* (2005) Radioimmunotherapy of solid tumors by targeting extra domain B fibronectin: identification of the best-suited radioimmunoconjugate. *Clin. Cancer Res.* 11, 7053–7063
- 71 Merten, H. *et al.* (2015) Antibody drug conjugates for tumor targeting – novel conjugation chemistries and the promise of non-IgG binding proteins. *Bioconjugate Chem.* <http://dx.doi.org/10.1021/acs.bioconjchem.5b00260>
- 72 Kimura, R.H. *et al.* (2009) Engineered knottin peptides: a new class of agents for imaging integrin expression in living subjects. *Cancer Res.* 69, 2435–2442
- 73 Jiang, L. *et al.* (2015) ^{64}Cu -labeled divalent cystine knot peptide for imaging carotid atherosclerotic plaques. *J. Nucl. Med.* 56, 939–944
- 74 Jiang, L. *et al.* (2010) Evaluation of a ^{64}Cu -labeled cystine-knot peptide based on agouti-related protein for PET of tumors expressing $\alpha\beta 3$ integrin. *J. Nucl. Med.* 51, 251–258
- 75 Josephson, K. *et al.* (2014) mRNA display: from basic principles to macrocycle drug discovery. *Drug Discov. Today* 19, 388–399
- 76 Hooper, A.J. and Burnett, J.R. (2013) Anti-PCSK9 therapies for the treatment of hypercholesterolemia. *Exp. Opin. Biol. Ther.* 13, 429–435
- 77 Mullard, A. (2012) Cholesterol-lowering blockbuster candidates speed into Phase III trials. *Nat. Rev. Drug Discov.* 11, 817–819
- 78 Tolcher, A.W. *et al.* (2011) Phase I and pharmacokinetic study of CT-322 (BMS-844203), a targeted adnectin inhibitor of VEGFR-2 based on a domain of human fibronectin. *Clin. Cancer Res.* 17, 363–371
- 79 Waters, J.D. *et al.* (2012) CT322, a VEGFR-2 antagonist, demonstrates anti-glioma efficacy in orthotopic brain tumor model as a single agent or in combination with temozolomide and radiation therapy. *J. Neurooncol.* 110, 37–48
- 80 Ahlgren, S. *et al.* (2010) Targeting of HER2-expressing tumors using In-111-ABY-025, a second-generation affibody molecule with a fundamentally reengineered scaffold. *J. Nucl. Med.* 51, 1131–1138
- 81 Friedman, M. *et al.* (2007) Phage display selection of Affibody molecules with specific binding to the extracellular domain of the epidermal growth factor receptor. *Protein Eng. Des. Sel.* 20, 189–199
- 82 Li, J. *et al.* (2010) Selection of affibody molecules to the ligand-binding site of the insulin-like growth factor-1 receptor. *Biotechnol. Appl. Biochem.* 55, 99–109
- 83 Lindborg, M. *et al.* (2011) Engineered high-affinity affibody molecules targeting platelet-derived growth factor receptor β *in vivo*. *J. Mol. Biol.* 407, 298–315
- 84 Malm, M. *et al.* (2013) Inhibiting HER3-mediated tumor cell growth with affibody molecules engineered to low picomolar affinity by position-directed error-prone PCR-like diversification. *PLoS One* 8, e62791
- 85 Ebersbach, H. *et al.* (2007) Affilin-novel binding molecules based on human gamma-B-crystallin, an all 13-sheet protein. *J. Mol. Biol.* 372, 172–185
- 86 Fiedler, E. *et al.* (2010) *Ubiquitin or Gamma-crystalline Conjugates for use in therapy, Diagnosis and Chromatography*. U.S. Patent. 7,838,629
- 87 Richter, A. *et al.* (2013) Anticalins: exploiting a non-Ig scaffold with hypervariable loops for the engineering of binding proteins. *FEBS Lett.* 588, 213–218
- 88 Mross, K. *et al.* (2011) Abstract A212: First in human phase I study of PRS-050 (Angiocal), a VEGF-A targeting anticalin, in patients with advanced solid tumors: Results of a dose escalation study. *Mol. Cancer Ther.* 10 (Suppl. 11), A212
- 89 Olwill, S.A. *et al.* (2013) A highly potent and specific MET therapeutic protein antagonist with both ligand-dependent and ligand-independent activity. *Mol. Cancer Ther.* 12, 2459–2471
- 90 Schoenfeld, D. *et al.* (2009) An engineered lipocalin specific for CTLA-4 reveals a combining site with structural and conformational features similar to antibodies. *Proc. Natl. Acad. Sci. U. S. A.* 106, 8198–8203
- 91 Jensen, K. *et al.* (2013) *Mutins of Tear Lipocalin and Methods for obtaining the same*. US Patent 20,130,017,996
- 92 van Scheltinga, A.G.T. *et al.* (2014) In vivo visualization of MET tumor expression and anticalin biodistribution with the MET-specific anticalin ^{89}Zr -PRS-110 PET tracer. *J. Nucl. Med.* 55, 665–671
- 93 Rohn, J. (2010) Anaphore. *Nat. Biotechnol.* 28, 1143
- 94 Allen, J.E. *et al.* (2012) Targeting TRAIL death receptor 4 with trivalent DR4 Atrimer complexes. *Mol. Cancer Ther.* 11, 2087–2095
- 95 Thogersen, C. and Holdack, J. (2006) A tetranectin-based platform for protein engineering. *Innov. Pharm. Technol* 27–30. In: http://www.iptonline.com/articles/public/IPT_18_pg27-31_2005.pdf

- 96 Braddock, M. (2007) 11th Annual inflammatory and immune diseases drug discovery and development summit: 12–13 March 2007, San Francisco, USA. *Exp. Opin. Investig. Drugs* 16, 909–917
- 97 Angelini, A. *et al.* (2012) Bicyclic peptide inhibitor reveals large contact interface with a protease target. *ACS Chem. Biol.* 7, 817–821
- 98 Baeriswyl, V. *et al.* (2012) Bicyclic peptides with optimized ring size inhibit human plasma kallikrein and its orthologues while sparing paralogous proteases. *ChemMedChem* 7, 1173–1176
- 100 Heinis, C. *et al.* (2009) Phage-encoded combinatorial chemical libraries based on bicyclic peptides. *Nat. Chem. Biol.* 5, 502–507
- 101 Diderich, P. and Heinis, C. (2014) Phage selection of bicyclic peptides binding Her2. *Tetrahedron* 70, 7733–7739
- 102 Diem, M.D. *et al.* (2014) Selection of high-affinity Centyrin FN3 domains from a simple library diversified at a combination of strand and loop positions. *Protein Eng. Des. Sel.* 27, 419–429
- 103 Kolmar, H. (2008) Alternative binding proteins: biological activity and therapeutic potential of cystine-knot miniproteins. *FEBS J.* 275, 2684–2690
- 104 Aldridge, S. (2012) Deal validates DARPins. *Nat. Biotechnol.* 30, 1014
- 105 Stumpp, M.T. *et al.* (2008) DARPins: a new generation of protein therapeutics. *Drug Discov. Today* 13, 695–701
- 106 Wolf, S. *et al.* (2011) Phase I Mp0112 Wet AMD Study: results of a single escalating dose study with DARPIn(R) MP0112 in wet AMD. *ARVO Meeting Abstracts* 52, 1655
- 107 Patel, M. *et al.* (2011) Single ascending doses of DARPIn(R), MP0112, show potential for quarterly dosing in DME. *ARVO Meeting Abstracts* 52, 582
- 108 Grabulovski, D. *et al.* (2007) A novel, non-immunogenic Fyn SH3-derived binding protein with tumor vascular targeting properties. *J. Biol. Chem.* 282, 3196–3204
- 109 Devy, L. *et al.* (2007) PEGylated DX-1000: pharmacokinetics and antineoplastic activity of a specific plasmin inhibitor. *Neoplasia* 9, 927–937
- 110 Dunlevy, F.K. *et al.* (2012) Anti-inflammatory effects of DX-890, a human neutrophil elastase inhibitor. *J. Cys. Fibros.* 11, 300–304
- 111 Saudubray, F. *et al.* (2003) Phase IIa clinical study of a new human neutrophil elastase inhibitor (hNE), EPI hNE4 (DX-890), with repeated administration by inhalation in adult cystic fibrosis patients. *J. Cyst. Fibros.* 2, A85
- 112 Scott, C.J. and Taggart, C.C. (2010) Biologic protease inhibitors as novel therapeutic agents. *Biochimie* 92, 1681–1688
- 113 Steemson, J.D. *et al.* (2014) Tracking molecular recognition at the atomic level with a new protein scaffold based on the OB-fold. *PLoS One* 9, e86050
- 114 Mintz, C.S. and Crea, R. (2013) Protein scaffolds. *BioProcess Int.* 11, 2
- 115 Getmanova, E.V. *et al.* (2006) Antagonists to human and mouse vascular endothelial growth factor receptor 2 generated by directed protein evolution *in vitro*. *Chem. Biol.* 13, 549–556
- 116 Parker, M. *et al.* (2005) Antibody mimics based on human fibronectin type three domain engineered for thermostability and high-affinity binding to vascular endothelial growth factor receptor two. *Protein Eng. Des. Sel.* 18, 435–444
- 117 Hackel, B.J. *et al.* (2010) Stability and CDR composition biases enrich binder functionality landscapes. *J. Mol. Biol.* 401, 84–96
- 118 Feldwisch, J. *et al.* (2010) Design of an optimized scaffold for affibody molecules. *J. Mol. Biol.* 398, 232–247
- 119 Friedman, M. *et al.* (2009) Engineering and characterization of a bispecific HER2×EGFR-binding affibody molecule. *Biotechnol. Appl. Biochem.* 54, 121–131
- 120 Wahlberg, E. *et al.* (2003) An affibody in complex with a target protein: structure and coupled folding. *Proc. Natl. Acad. Sci. U. S. A.* 100, 3185–3190
- 121 Baum, R.P. *et al.* (2010) Molecular imaging of HER2-expressing malignant tumors in breast cancer patients using synthetic In-111- or Ga-68-labeled Affibody molecules. *J. Nucl. Med.* 51, 892–897
- 122 Lorey, S. *et al.* (2014) Novel ubiquitin-derived high affinity binding proteins with tumor targeting properties. *J. Biol. Chem.* 289, 8493–8507
- 123 Eggenstein, E. *et al.* (2014) Structure-guided engineering of Anticalins with improved binding behavior and biochemical characteristics for application in radio-immuno imaging and/or therapy. *J. Struct. Biol.* 185, 203–214
- 124 Schlehner, S. and Skerra, A. (2002) Tuning ligand affinity, specificity, and folding stability of an engineered lipocalin variant – a so-called ‘anticalin’ – using a molecular random approach. *Biophys. Chem.* 96, 213–228
- 125 Wiedersich, J. *et al.* (2008) Temperature and pressure dependence of protein stability: the engineered fluorescein-binding lipocalin FluA shows an elliptic phase diagram. *Proc. Natl. Acad. Sci. U. S. A.* 105, 5756–5761
- 126 Mross, K. *et al.* (2013) First-in-human Phase I study of PRS-050 (Angiocal), an Anticalin targeting and antagonizing VEGF-A, in patients with advanced solid tumors. *PLoS One* 8, e83232
- 127 Byla, P. *et al.* (2010) Selection of a novel and highly specific tumor necrosis factor alpha (TNF alpha) antagonist: insight from the crystal structure of the antagonist–TNFalpha complex. *J. Biol. Chem.* 285, 12096–12100
- 128 Angelini, A. *et al.* (2012) Chemical macrocyclization of peptides fused to antibody Fc fragments. *Bioconjugate Chem.* 23, 1856–1863
- 129 Angelini, A. *et al.* (2012) Bicyclization and tethering to albumin yields long-acting peptide antagonists. *J. Med. Chem.* 55, 10187–10197
- 130 Christmann, A. *et al.* (1999) The cystine knot of a squash-type protease inhibitor as a structural scaffold for *Escherichia coli* cell surface display of conformationally constrained peptides. *Protein Eng.* 12, 797–806
- 131 Sermadiras, I. *et al.* (2013) Recombinant expression and *in vitro* characterisation of active huwentoxin-IV. *PLoS One* 8, e83202
- 132 Moore, S.J. *et al.* (2013) Engineered knottin peptide enables noninvasive optical imaging of intracranial medulloblastoma. *Proc. Natl. Acad. Sci. U. S. A.* 110, 14598–14603
- 133 Heitz, A. *et al.* (2008) Knottin cyclization: impact on structure and dynamics. *BMC Struct. Biol.* 8, 54
- 134 Muller, Y.A. *et al.* (2002) The cystine knot promotes folding and not thermodynamic stability in vascular endothelial growth factor. *J. Biol. Chem.* 277, 43410–43416
- 135 Miao, Z. *et al.* (2009) An engineered knottin peptide labeled with 18F for PET imaging of integrin expression. *Bioconjugate Chem.* 20, 2342–2347
- 136 Binz, H.K. *et al.* (2003) Designing repeat proteins: well-expressed, soluble and stable proteins from combinatorial libraries of consensus ankyrin repeat proteins. *J. Mol. Biol.* 332, 489–503
- 137 Campochiaro, P.A. *et al.* (2012) Treatment of diabetic macular edema with a designed ankyrin repeat protein that binds vascular endothelial growth factor: a Phase 1/2 study. *Am. J. Ophthalmol.* 155, 697–704
- 138 Schlatter, D. *et al.* (2012) Generation, characterization and structural data of chymase binding proteins based on the human Fyn kinase SH3 domain. *MAbs* 4, 497–508
- 139 Silacci, M. *et al.* (2014) Linker length matters, Fynomer-Fc fusion with an optimized linker displaying picomolar IL-17A inhibition potency. *J. Biol. Chem.* 289, 14392–14398
- 140 Markland, W. *et al.* (1996) Iterative optimization of high-affinity protease inhibitors using phage display. 2. Plasma kallikrein and thrombin. *Biochemistry* 35, 8058–8067
- 141 Markland, W. *et al.* (1996) Iterative optimization of high-affinity protease inhibitors using phage display. 1. Plasmin. *Biochemistry* 35, 8045–8057
- 142 Schneider, L. *et al.* (2007) Critical role of kallikrein in hereditary angioedema pathogenesis: a clinical trial of ecallantide, a novel kallikrein inhibitor. *J. Allergy Clin. Immunol.* 120, 416–422
- 143 Gilbreth, R. *et al.* (2014) Stabilization of the third fibronectin type III domain of human tenascin-C through minimal mutation and rational design. *Protein Eng. Des. Sel.* 27, 411–418
- 144 Gompels, M.M. *et al.* (2005) C1 inhibitor deficiency: consensus document. *Clin. Exp. Immunol.* 139, 379–394 Corrigenda 141, 189–190.
- 145 Levy, J.H. and O'Donnell, P.S. (2006) The therapeutic potential of a kallikrein inhibitor for treating hereditary angioedema. *Expert Opin. Investig. Drugs* 15, 1077–1090
- 146 Lee, C.M. *et al.* (2007) Selection of human antibody fragments by phage display. *Nat. Protoc.* 2, 3001–3008
- 147 Sheffer, A.L. *et al.* (2011) Ecallantide (DX-88) for acute hereditary angioedema attacks: Integrated analysis of 2 double-blind, phase 3 studies. *J. Allergy Clin. Immunol.* 128, 153–239
- 148 Attucci, S. *et al.* (2006) EPI-hNE4, a proteolysis-resistant inhibitor of human neutrophil elastase and potential anti-inflammatory drug for treating cystic fibrosis. *J. Pharmacol. Exp. Ther.* 318, 803–809
- 149 Grimbert, D. *et al.* (2003) Characteristics of EPI-hNE4 aerosol: a new elastase inhibitor for treatment of cystic fibrosis. *J. Aerosol Medicine* 16, 121–129
- 150 Tolmachev, V. *et al.* (2010) A HER2-binding Affibody molecule labelled with 68Ga for PET imaging: direct *in vivo* comparison with the 111In-labelled analogue. *Eur. J. Nucl. Med. Mol. Imag.* 37, 1356–1367
- 151 Orlova, A. *et al.* (2006) Tumor imaging using a picomolar affinity HER2 binding affibody molecule. *Cancer Res.* 66, 4339–4348
- 152 Neufeld, G. *et al.* (1999) Vascular endothelial growth factor (VEGF) and its receptors. *FASEB J.* 13, 9–22
- 153 Mamluk, R. *et al.* (2010) Anti-tumor effect of CT-322 as an adnectin inhibitor of vascular endothelial growth factor receptor-2. *MAbs* 2, 199–208
- 154 Harris, J.M. and Chess, R.B. (2003) Effect of pegylation on pharmaceuticals. *Nat. Rev. Drug Discov.* 2, 214–221

- 155 Schiff, D. *et al.* (2010) Phase II study of CT-322, a targeted biologic inhibitor of VEGFR-2 based on a domain of human fibronectin, in recurrent glioblastoma (rGBM). *J. Clin. Oncol.* 28 (Suppl. 15), 2011
- 156 Mitchell, T. *et al.* (2014) Pharmacologic profile of the adnectin BMS-962476, a small protein biologic alternative to PCSK9 antibodies for low-density lipoprotein lowering. *J. Pharmacol. Exp. Ther.* 350, 412–424
- 157 Stein, E.A. *et al.* (2014) LDL cholesterol reduction with BMS-962476, an adnectin inhibitor of PCSK9: results of a single ascending dose study. *J. Am. Col. Cardiol.* 63, 12_S
- 158 Ishihara, K. and Hirano, T. (2002) IL-6 in autoimmune disease and chronic inflammatory proliferative disease. *Cytokine Growth Factor Reviews* 13, 357–368
- 159 Available at: <http://www.clinicaltrials.gov>
- 160 Wurch, T. *et al.* (2012) Novel protein scaffolds as emerging therapeutic proteins: from discovery to clinical proof-of-concept. *Trends Biotechnol.* 30, 575–582
- 161 Nemeth, E. (2009) Targeting the hepcidin-ferroportin axis in the diagnosis and treatment of anemias. *Adv. Hematol.* 2010
- 162 Jensen, K. *et al.* (2007) *Mutins of tear lipocalin and methods for obtaining the same.* Google Patents
- 163 Available at: <http://www.pieris-ag.com>
- 164 Gille, H. *et al.* (2008) Discovery and characterization of a novel Anticalin with potent in vivo antagonistic activity towards VEGF-A. *Cancer Res.* 68 (Suppl. 9), 4077
- 165 Plückthun, A. (2015) Designed ankyrin repeat proteins (DARPin): binding proteins for research, diagnostics, and therapy. *Ann. Rev. Pharmacol. Toxicol.* 55, 489–511
- 166 Reichert, J.M. *et al.* (2014) 9th Annual European Antibody Congress, November 11–13, 2013, Geneva, Switzerland. *MAbs* 6, 309–326
- 167 Heinis, C. and Winter, G. (2015) Encoded libraries of chemically modified peptides. *Curr. Opin. Chem. Biol.* 26, 89–98
- 168 De Genst, E. *et al.* (2006) Molecular basis for the preferential cleft recognition by dromedary heavy-chain antibodies. *Proc. Natl. Acad. Sci. U. S. A.* 103, 4586–4591
- 169 Rouet, R. *et al.* (2015) Fully human VH single domains that rival the stability and cleft recognition of camelid antibodies. *J. Biol. Chem.* 290, 11905–11917
- 170 Lipovsek, D. (2011) Adnectins: engineered target-binding protein therapeutics. *Protein Eng. Des. Sel.* 24, 3–9
- 171 Skerra, A. (2008) Alternative binding proteins: anticalins - harnessing the structural plasticity of the lipocalin ligand pocket to engineer novel binding activities. *FEBS J.* 275, 2677–2683
- 172 Desmet, J. *et al.* (2014) Structural basis of IL-23 antagonism by an Alphabody protein scaffold. *Nat. Communications* 5, 5237
- 173 Bloom, J.D. *et al.* (2006) Structural determinants of the rate of protein evolution in yeast. *Mol. Biol. Evol.* 23, 1751–1761
- 174 Dellus-Gur, E. *et al.* (2013) What makes a protein fold amenable to functional innovation? Fold polarity and stability trade-offs. *J. Mol. Biol.* 425, 2609–2621
- 175 Miao, Z. *et al.* (2011) Protein scaffold-based molecular probes for cancer molecular imaging. *Amino Acids* 41, 1037–1047
- 176 Thurber, G.M. *et al.* (2008) Antibody tumor penetration: transport opposed by systemic and antigen-mediated clearance. *Adv. Drug Deliv. Rev.* 60, 1421–1434
- 177 Schmidt, M.M. and Wittrup, K.D. (2009) A modeling analysis of the effects of molecular size and binding affinity on tumor targeting. *Mol. Cancer Ther.* 8, 2861–2871
- 178 Yuan, F. *et al.* (1995) Vascular permeability in a human tumor xenograft: molecular size dependence and cutoff size. *Cancer Res.* 55, 3752–3756
- 179 Pruszynski, M. *et al.* (2014) Improved tumor targeting of anti-HER2 nanobody through *N*-succinimidyl 4-guanidinomethyl-3-iodobenzoate radiolabeling. *J. Nucl. Med.* 55, 650–656
- 180 Hackel, B.J. *et al.* (2012) Designed hydrophilic and charge mutations of the fibronectin domain: towards tailored protein biodistribution. *Protein Eng. Des. Sel.* 25, 639–647
- 181 Kimura, R.H. *et al.* (2012) Pharmacokinetically stabilized cystine knot peptides that bind alpha-v-beta-6 integrin with single-digit nanomolar affinities for detection of pancreatic cancer. *Clin. Cancer Res.* 18, 839–849
- 182 Tran, T.A. *et al.* (2008) Effects of lysine-containing mercaptoacetyl-based chelators on the biodistribution of 99mTc-labeled anti-HER2 Affibody molecules. *Bioconjugate Chem.* 19, 2568–2576
- 183 Goldenberg, D.M. *et al.* (2007) Cancer imaging and therapy with bispecific antibody pretargeting. *Update Cancer Ther.* 2, 19–31
- 184 Steiner, M. *et al.* (2013) Tumor-targeting antibody-anticalin fusion proteins for *in vivo* pretargeting applications. *Bioconjugate Chem.* 24, 234–241
- 185 Mandal, K. *et al.* (2012) Chemical synthesis and X-ray structure of a heterochiral [D-protein antagonist plus vascular endothelial growth factor] protein complex by racemic crystallography. *Proc. Natl. Acad. Sci. U. S. A.* 109, 14779–14784
- 186 Dintzis, H.M. *et al.* (1993) A comparison of the immunogenicity of a pair of enantiomeric proteins. *Proteins* 16, 306–308
- 187 Sheffer, A.L. *et al.* (2011) Ecallantide (DX-88) for acute hereditary angioedema attacks: integrated analysis of 2 double-blind, phase 3 studies. *J. Allergy Clin. Immunol.* 128, 153–159
- 188 Martello, J.L. *et al.* (2012) Ecallantide for treatment of acute attacks of hereditary angioedema. *Am. J. Health Syst. Pharm.* 69, 651–657
- 189 Ponce, R. *et al.* (2009) Immunogenicity of biologically-derived therapeutics: assessment and interpretation of nonclinical safety studies. *Regul. Toxicol. Pharmacol.* 54, 164–182
- 190 Brinks, V. *et al.* (2013) Preclinical models used for immunogenicity prediction of therapeutic proteins. *Pharm. Res.* 30, 1719–1728